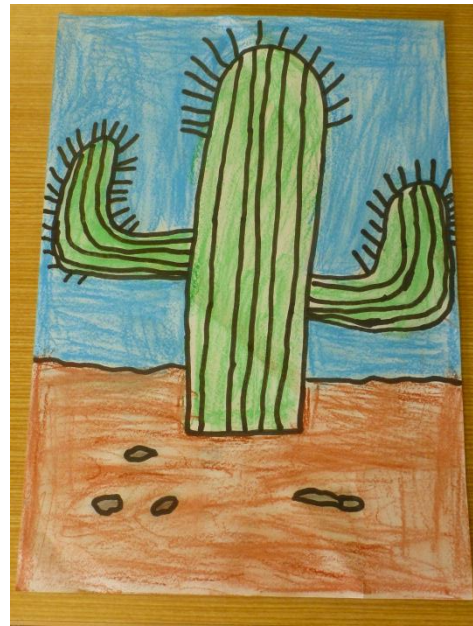


From the Easel



K / 1 Room. Cooper Bethune

In HSIE we have been learning about Places we know. We created silhouette pictures using yellow and orange paint. Black cut-outs of animals were added.



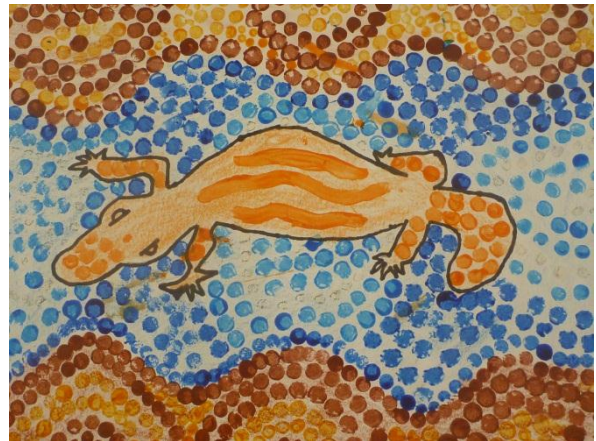
1 / 2 Room. Seth Jones

In HSIE we have been learning about wet and dry environments. Cactus plants are found in dry environments. We used pastels and smudged them and outlined with texta.



3 / 4 Room. Lizzie Byron

As part of our bushranger unit the students studied the Australian artist Sidney Nolan. This is Lizzie's representation from his series on Ned Kelly.



5 / 6 Room. Louis Lievens

As part of our school NAIDOC celebrations, our class studied some aspects of Aboriginal art. The students created this work using paint and black texta outlines. This is an example of TOBWABBA art which tells the story of the Worimi people.